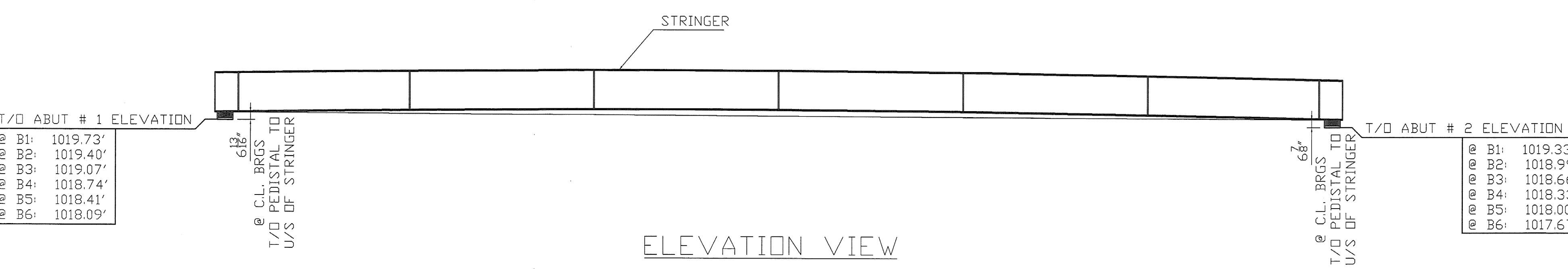


FRAMING PLAN



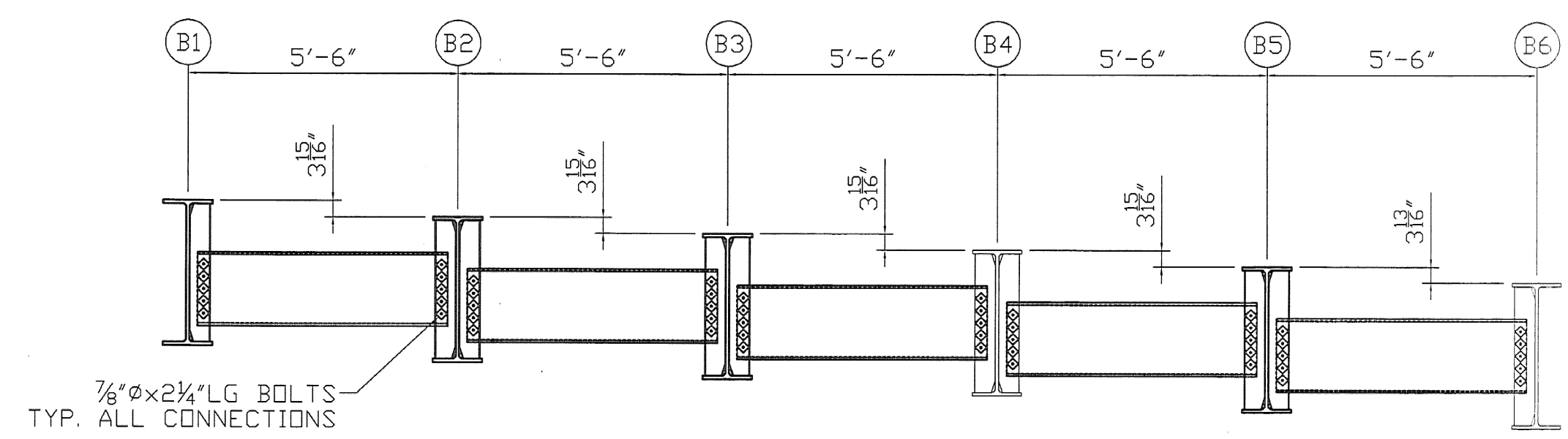
ELEVATION VIEW

FIELD NOTE: BEARING ASSEMBLY & ANCHORS BY OTHERS

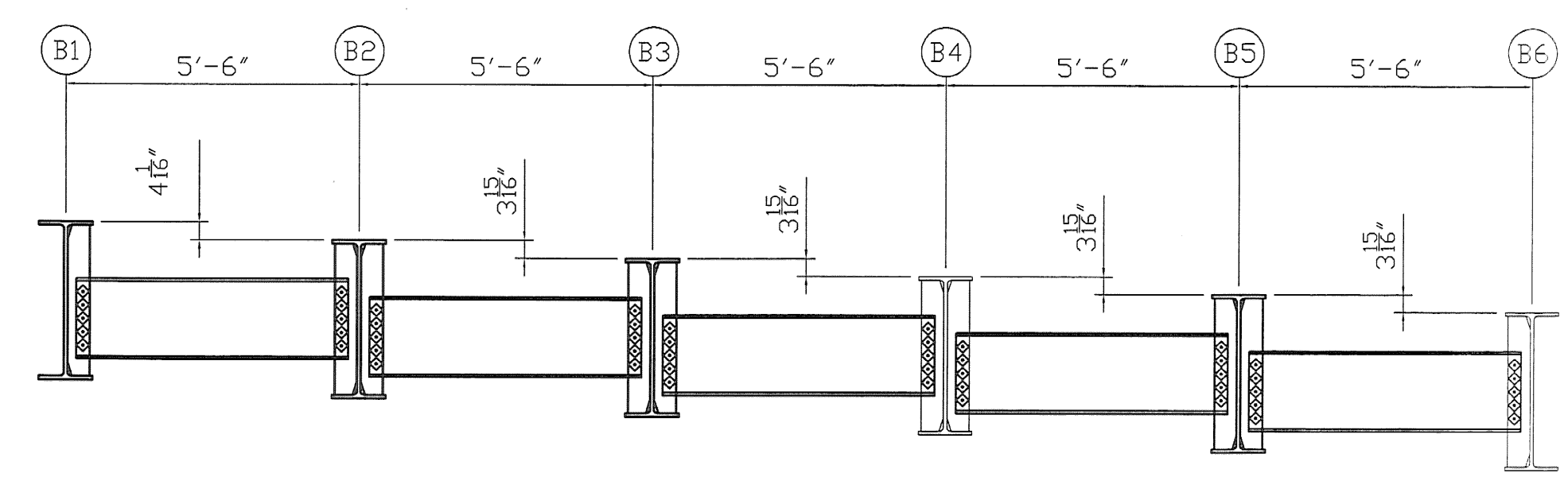
FIELD BOLT LIST										ASTM M164M (ASTM A325) TYPE 1 BOLTS U.N.O.		
LINE	ACTUAL No. REQ'D	BOLT DIAM	BOLT LENGTH	BOLTS / CONN.	# OF CONNS.	GRIP	THICKNESS OF PCS. CONNECTED			WASHER CODE	REMARKS	
1	350	3/8"	2 1/2"	70	5	1 3/4"	3/8"	1/2"		1	DIAPHRAGM TO BEAM CONNECTION	
2												
3												
4												
5												
6												

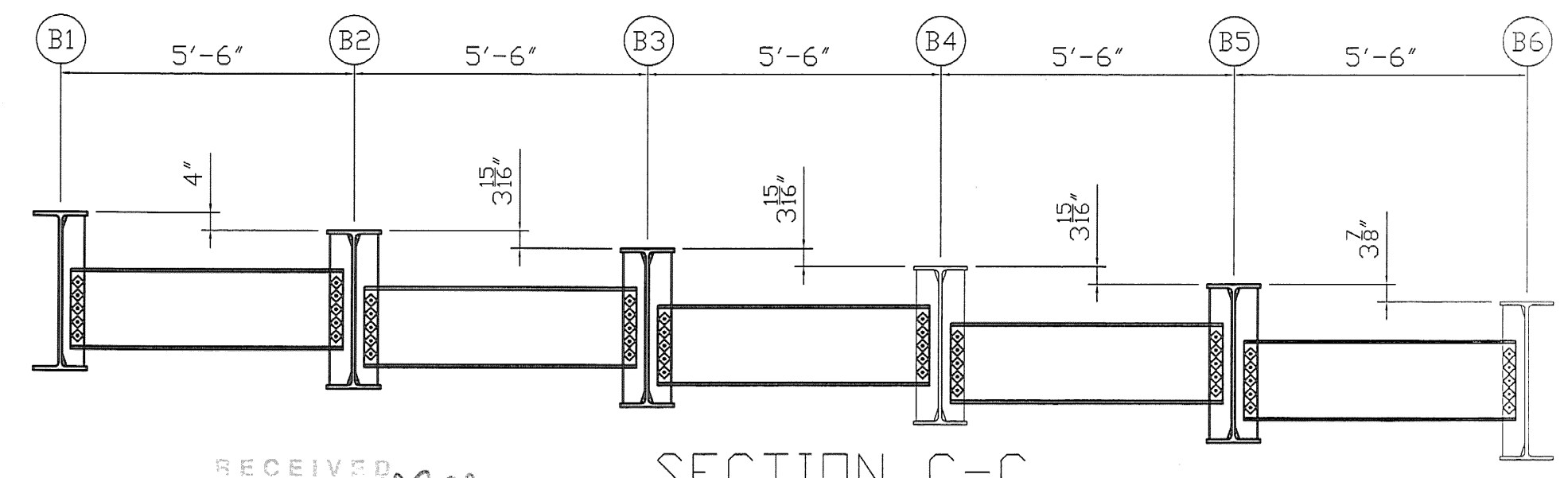
FIELD BOLT SUMMARY							NOTE: 4% ADDITIONAL BOLTS ADDED + 3 FOR TESTING	
LINE	No. OF BOLTS	BOLT DIAM	TYPE	BOLT LENGTH	ACTUAL COUNT	REMARKS	WEIGHT	
1	367	3/8"	ASTM - A325 TYPE 1	2 1/2"	350	w / 1 FLAT WASHER		
2								
3								
4								
TOTAL WT.								



SECTION A-A



SECTION B-B



SECTION C-C

RECEIVED  
 OK'D BY: *SES* OK'D BY: *mfm*  
 JAN 28 2009  
 APPROVED: *[Signature]*  
 BY: DATE 1/26/09

NOTE:  
 1. FOR GENERAL NOTES SEE GN1

SHOP NOTES  
 HOLES 15/16" (U.N.)  
 BOLTS NONE  
 PAINT SEE GN DWG  
 WELDS TO BE MADE USING ER80-NiL ELECTRODES  
 MATERIAL M270 Gr.50

REV. NO.	DATE	REVISION
3		
2		
1		

ERECTION DRAWING  
 VT.102 (MAJOR COLLECTOR) BRIDGE #16 CANAAN, VT  
 PROJECT NUMBER ER ST 0271 (16)

FOSTER • PRECISE  
 3 FARM LANE GEORGETOWN, MA 01833  
 978-352-2591 FAX 978-352-2182  
 OWNER: STATE OF VERMONT AGENCY OF TRANSPORTATION  
 CONTRACTOR: WINTERSET INC

DRAWN BY	CHECKED BY	JOB NO.	SHEET NO.
KC	WL	3476	E1
11/23/08	11/30/08		